

**Middle Peninsula Chesapeake Bay
Public Access Authority
Locality Submitted Sites For Project Consideration**
July 30, 2003 – Revised August 5, 2003 – Revised February 16, 2005

**Essex County
Local Priority**

#1. Route 680 terminus (Lowery's Landing)

Needs: Determine the exact location of VDOT property and potential for future use.



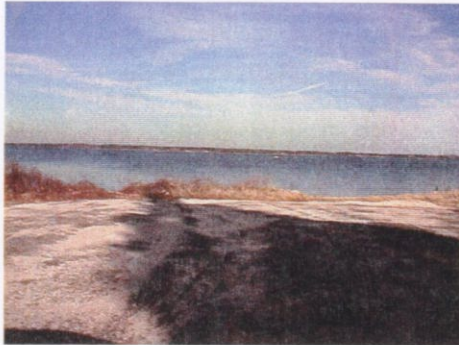
#2. Route 611 terminus (Wares Landing)

Needs: Determine the exact location of VDOT property and potential for future use.



#3. Route 684-(Bowlers Landing)

Needs: Determine the exact location of VDOT property and potential for future use.



Regional Priority Site

June Parker Marina- Possibly assist with the concept of creating a municipal marina

Need: financing, development and expansion.



King and Queen County

Local Priority

#1. Route 605 terminus (Chain Ferry Landing)

Needs: Determine the location of VDOT property and potential for future use.



#2. Route 602 (Dragon Run Bridge Crossing)

Needs: Determine the exact location of VDOT property and potential for future use.



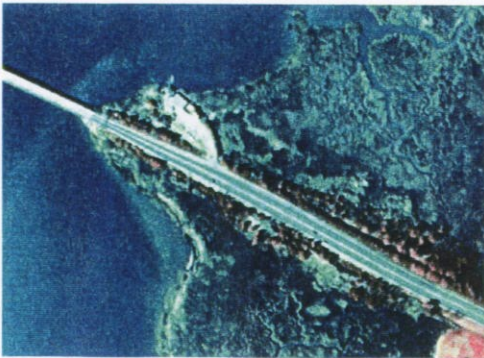
#3. Route 603 (Dragon Run Bridge Crossing)

Needs: Determine the exact location of VDOT property and potential for future use.



#4. Route 33-(Lord Delaware Bridge abutments)

Needs: Evaluate the feasibility of including a public boat landing in this area in conjunction with the interpretive center project.



#5. Route 602 (Melrose Landing)

Needs: Determine if improvements should be made to DGIF maintained access site.



#6. Route 611-(Waterfence Landing)

Needs: Determine if improvements should be made to DGIF maintained access site.



Mathews County

Local Priority

#1. Route 643 terminus (Haven Beach Road) Festival Beach

Needs: Assistance is needed in identifying and securing grant assistance (\$250,000) for a breakwater, sand replenishment and parking access project.



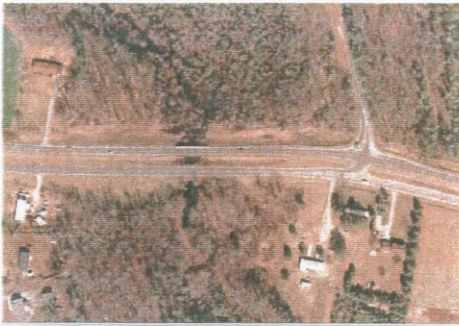
#2. Route 633 terminus (Tin Can Alley)

Needs: Determine the exact location of VDOT property and potential for future use.



#3. Route 14-North End Branch of the North River Bridge Cross Over

Needs: Determine if VDOT has excess right-of-way from an old alignment for canoe/kayak launch



4 Put-In Creek Head East River

Needs: Renovate historic turning basin



Regional Priority Site

New Point Lighthouse/Island- Regional effort to preserve this Chesapeake Bay Landmark

Need: To make the island accessible to the public for recreational and historical purposes



Town of West Point

Local Priority

#1. Pointe Restaurant complex

Needs: Funding and infrastructure improvements

King William

State Route 602 - Judy's Swamp

Needs: delineation of VDOT/county property and should have an assessment for future use and improvement.

State Route 654 - Pampitike Farm

Needs: delineation of VDOT/county property and should have an assessment for future use and improvement.

State Route 672 - Lester Manor

Needs: delineation of VDOT/county property and should have an assessment for future use and improvement.